



OFFICE OF THE DIRECTOR

DATE:

May 23, 2024

TO:

The Honorable Josh Shapiro
Governor
Commonwealth of Pennsylvania

FROM:

Randy Padfield
Director, PA Emergency Management Agency

TIME PERIOD:

This report covers the period from 0600 hours, May 22, 2024, through 0600 hours, May 23, 2024.

STATUS REPORT: (as of 0600 hours)

THREAT STATUS:

National Terrorism Advisory System: There are no current advisories.

Commonwealth Response Coordination Center (CRCC) Status: Normal Operations

County EOC Activations: None

Municipal EOC Activations: None

CAPABILITIES STATUS:

PA All-Hazards Type-3 Incident Management / Team – Mission Capable
PA-Task Force 1 (PA-TF1) – Mission Capable

INFRASTRUCTURE STATUS:

Major Road Closures:	None
Power Outage Reports:	As of 0600 hours, 5,322 customers
Telephone Outage Reports:	As of 0600 hours, 300 customers

SIGNIFICANT EVENTS:

OPEN:

CHEMICAL FIRE – Greene County, 5/20/24 - Emergency units responded to a chemical fire at the Consol Energy Enlow Fork Mining facility located at 322 Enon Church Road, East Finley Township. A 100x100, three-story building was fully involved and contains an unknown amount of diesel fuel and an unknown “frothier”. Multiple mutual aid companies responded including non-AFFF foam units from Washington and Greene counties. The county reported that command mentioned evacuations in the area but is unconfirmed if this is occurred. The DEP Southwest Regional Office (SWRO) Emergency Response Team responded. The incident location was changed to Richhill Township, Greene County. Greene County requested that the DEP conduct air monitoring on State Route 18 from the village of Nineveh to State Route 231. DEP SWRO contacted the Environmental Protection Agency for dust tracks and area RAE, which the EPA is providing. Greene County EMA is reporting that all Fayette, Greene, and Washington County units have cleared the scene.

FIRST AMENDMENT ACTIVITY – Philadelphia County, 5/18/24 - The Drexel University Police and Philadelphia Police Department (PPD) are monitoring first amendment activity on the university’s Korman Center Academic Quadrangle located in the 3200 block of Market Street in the City of Philadelphia. Approximately 75 protestors established a tent encampment. The police surrounded the encampment with barricades, and they let people out, but no one in. Another 40 protestors were outside the barricaded area. Drexel University activated their Emergency Operations Center (EOC), and a campus lockdown was issued. The protest was peaceful, and the protesters have settled into the encampment for the night. There is still an active police presence, and Drexel University EOC remains activated. 5/19/24 – There were two additional marches in the city. A union march near City Hall and a march for Palestine Health Care Workers near Jefferson Hospital. No issues were reported at either.

ADVERSE WEATHER - STATEWIDE, 5/17/24 – Thunderstorms rapidly moved through southwestern Pennsylvania on Friday, 5/17/24, creating high winds and resulting in tornado warnings for southeast Allegheny and west central Westmoreland Counties and flash flood warnings in central Allegheny County. Allegheny County reported trees and wires down and flooding on several secondary roads. A water rescue occurred in the Borough of West Mifflin, Allegheny County, when a vehicle got stuck in flood waters. A damage survey was conducted last evening in Aspinwall Borough, Allegheny County, resulting in a preliminary EF-1 tornado. Another tornado was confirmed as an EF-0 near the Pittsburgh Zoo on Baker Street in the city of Pittsburgh, Allegheny County. Surveys in Harrison City, Westmoreland County, between Irwin and Export Boroughs, Westmoreland County, Lincoln/Mount Vernon/Elrama in Allegheny County, and Finleyville Borough, Washington County, will be conducted today. 5/18/24 - After conducting damage surveys the last two days in various counties, the NWS Pittsburgh issued a Public Information Statement updating the survey results from the tornadoes that impacted the western part of the Commonwealth. An EF-1, Highland Park Tornado, began just outside of Highland Park and continued northeast across the Pittsburgh Zoo and across the Allegheny River, weakening below tornadic intensity as it entered Aspinwall Borough, Allegheny County. The Allegheny County Airport Tornado was declared an EF Unknown. Video evidence confirmed a brief, weak tornado tracking just north of the airport. Video analysis puts the track across the industrial complex located at Noble Drive. No known damage was observed, so wind estimates are unknown. The Elrama/Elizabeth Tornado was confirmed to be an EF-0 with damage occurring specifically near Elrama, Allegheny County, and Elizabeth in Washington County. An EF-0 was confirmed in the Harrison City area of Westmoreland County, with damage ranging from the Penn Township Municipal Complex to the Greensburg-Jeannette Regional Airport.

ADVERSE WEATHER - STATEWIDE, 5/11/24 - Severe thunderstorms impacted southwestern Pennsylvania counties early Saturday evening (5/11/24). A possible tornado touchdown was reported in the area of the Crossroads Church on Walter Long Drive in Union

Township, Washington County, and blew the roof off the building. An undetermined number of injuries were reported, and emergency units assessed the area. Allegheny, Fayette, Lawrence, Washington, and Westmoreland counties were under a Tornado Warning that has expired. A garage collapse, with damage to the residence, was reported at 500 Church Hill Road in Venetia, Peters Township, Washington County. No injuries were reported in this incident. A Wireless Emergency Alert (WEA) message was sent to Washington County and parts of Allegheny County for the tornado in Washington County. Fayette County reported a possible tornado in the area of Flat Rock and Guthrie Roads in Henry Clay Township on Saturday evening, with multiple trees down. The county followed up with the National Weather Service. The storms were monitored by the Commonwealth Watch and Warning Center as they worked their way across Pennsylvania. Union Township, Washington County, issued a Declaration of Disaster Emergency on 5/11/24. Preliminary damage surveys conducted by the National Weather Service in Pittsburgh have yielded the following results: EF2 tornado near Finleyville Borough, Washington County; an EF0 tornado near New Salem, Fayette County; and an EF1 tornado near Glades, Fayette County.

ANI / ALI 911 DATA ISSUES – Cumberland County, 5/6/24 – The Cumberland County 911 Center was having intermittent issues with not receiving ANI and ALI information on some calls over the past week. The root cause appeared to be a recent router firmware update, and technicians are working to resolve the issue. No other Pennsylvania counties are affected. A meeting was held on 5/14/24 with VESTA and Brightspeed. There were some improvements to the system, however the issue was not fully resolved.

ROAD CLOSURE DUE TO SUBSIDENCE – Cambria County, 4/25/24 - An engineer for West Taylor Township contacted the county EMA about subsidence of the roadway in the 100 block of Batzel Road. Emergency management staff responded and noted considerable subsidence of the roadway. This is reportedly an ongoing issue where the township lays down new asphalt as a temporary measure. Electrical service and a cable line are pulled tight between the nearby residence and a utility pole which seems to have shifted. There is also considerable twisting of the guardrail. Cement barriers will be requested to close the roadway. There are no residents that are currently affected by this closure. There will be a minor detour for emergency vehicles. Engineers are working with the township to develop a long-term repair plan.

ADVERSE WEATHER – Statewide, 4/3/24 - Heavy rains and severe thunderstorms crossing the Commonwealth have caused widespread flooding. The National Weather Service issued numerous Flash Flood Warnings, Flood Warnings, and Flood Watches. Municipal declarations have been received from Red Stone Township, German Township, and Brownsville Borough in Fayette County; Nippenose Township in Lycoming County; Marianna Borough, Bentleyville Borough, Deemston Borough in Washington County, and Punxsutawney Borough in Jefferson County. Multiple roadways across the Commonwealth closed due to flooding, mudslides, and down trees and wires. Numerous water rescues were conducted from vehicles and residences. The excessive rainfall also caused alerts at the Lake Lynn Dam in Springhill Township, Fayette County, which reached Stage 1 alert status. The Joseph C. Bacon Dam and Ambridge Reservoir in Independence Township, Beaver County, had water flowing over the emergency spillway. Ambridge Water Authority officials believed that there was no concern unless additional rain was received. The Beaver County EOC was partially activated to prepare for possible evacuations of the inundation area. Crews were monitoring the status throughout the night. The Quemahoning Dam in Somerset County was also under Unusual Event Conditions due to rising water levels. Employees have since discontinued 24-hour surveillance due to the dam being below flood stage. The Blue Marsh Dam in Lower Heidelberg Township, Berks County reported they increased the outflow of the Blue Marsh Lake from 929 CFS to 2000 CFS. This raised the Tulpehocken Creek at Red Bridge by 12-

inches. The storms also caused many power outages across the Commonwealth. Lackawanna County reported that their Emergency Communications Center was without commercial power and was operating on generator power. Later, they reported that their generator was malfunctioning, and were operating on battery power with 3.5 hours remaining. Lackawanna County 9-1-1 contacted PPL to escalate getting power back to their center, and PEMA contacted the Public Utility Commission (PUC) for assistance. At 1545 hours, the generators were reportedly functional, and PPL had a crew on site. Commercial power has been restored at the center, and all systems are functional. There was no disruption in service throughout the incident. 4/4/24 – DeSales University Campus in Upper Saucon Township, Lehigh County was without electricity since the storm on 4/3. All classes and events were cancelled for 4/4 and resident students were sent home. Power was restored the afternoon of 4/4. The Sullivan County 911/EMA offices were on generator power for approximately 11 hours when commercial power was lost. All EOCs have demobilized, and all shelters have closed. 4/7/24, PA-403 is closed in both directions, between the intersections of Krings and Soap Hollow Roads in Conemaugh Township, Somerset County, and the intersection of Somerset Pike (PA-985) in Upper Yoder Township, Cambria County, due to the roadway being cracked and sinking. 4/11/24, the following municipalities in Greene County have issued Declarations of Disaster Emergency; Aleppo Township, Center Township, Jackson Township, Jefferson Township, Perry Township, Richhill Township, Wayne Township, and Washington Township.

RAILROAD INCIDENT – Northampton County, 3/2/24 - Emergency units responded to a train derailment in the area on 2270 Riverside Road in Lower Saucon Township. Upon arrival, crews reported multiple cars derailed with two locomotives tankers on their side with two partially in the Lehigh River. One contained ethanol and the two others contained liquid propane gas (LPG). This is a Norfolk Southern (NS) freight-only line and rail traffic was stopped. The Lehigh County HAZMAT team monitored the air with no readings. A representative of the railroad responded and evaluated the scene. Northampton County EOC activated to an enhanced level to assist with resources. There were no shelter-in-place orders or evacuations. It was determined three trains were involved in the incident. Train #24X-01 was travelling eastbound on the tracks and was subsequently rear-ended by Train #268H which caused an unknown number of cars to derail. The third train, #19G-01, was travelling westbound and crashed into the derailed cars causing an unknown number of cars to derail. Personnel were still in the locomotives and rescue operations were conducted. Northampton County boats reported an unknown sheen on the river. NS Police secured the scene and NS HAZMAT responded. A "slow drip" diesel leak was reported coming from one of the engines that was leaking into the river. Additionally, approximately 20 cubic yards of plastic pellets spilled from Car #GPLX77419 onto the ballast. Until the NTSB arrives, no re-rail or cleanup operations can occur. NS requested PennDOT assistance with extended road closure. All Lehigh County units cleared the scene and Northampton County EOC went back to normal operations. DEP NERO responded to support operations. The derailed tank cars that were placarded for ethanol and LPG contain residual amounts and were not leaking. The locomotives leaked approximately 50 gallons of diesel fuel until the leak was plugged; booms were placed to contain any diesel fuel entering the river. Most of the containers were identified and were empty or contained non-hazardous materials. On 3/3/24 the locomotives were pulled from the river. On 3/8/24, NS reported all fluids were removed from both engines that were still on site. The riverbank was replaced with riprap. The tank cars were still on site and awaiting removal. The ethanol tank car was scheduled for cleaning on Wednesday, 3/13/24. Lewis Environmental was on site over the weekend to check on booms still in place on the Lehigh River. The sheen was minimal, but still visible. Stone along the rail beds was replaced. NS followed up with county EMA on Monday, 3/11/24. As of 3/14/24, track repair, cleanup, and rail car recovery operations are ongoing. 3/20/24, Steam cleaning starts tomorrow. Engines and LP cars still on-site waiting removal. Off load for the plastic pellet car is set for Monday 3/25/24. As of 3/26/24, PA DEP was on sight and cleared Norfolk Southern to remove

booms from the water which should happen later this week. The Ethanol car steam cleaning was completed with no issues. The PVC pellet car remains on site and the transfer of pellets will wait until the locomotives are removed for easier access. Still no time frame for car removal. On 4/5/24, NS reported to Northampton County EMA that all booms were pulled from the river, and there was no sheen noted. 4/18/24, NS reported the locomotives should be loaded on flat racks and the pellet car should be unloaded by the end of next week. 4/25/24, NS reported that they are in the process of prepping the locomotives for removal. 4/29/24 – Both locomotives and the Ethanol car have been removed from the site.

TRAIN DERAILMENT – Columbiana County, Ohio, 2/3/23 - On 2/3/23 at 2130 hours, mutual aid crews from Beaver County responded to a train derailment near Taggart Street, East Palestine, Ohio. Approximately 53 railcars derailed and some of them caught fire. There were five cars of vinyl chloride within the wreckage. Around 2330 hours a call was received from an Environmental Protection Agency (EPA) Region 3 representative, and they advised there was no current impact to PA. EPA Region 5 and Ohio EPA set up air monitoring equipment and they also used handheld monitors, and nothing was detected. Members of the PA Department of Environmental Protection (DEP) Southwest Regional Office were also onsite monitoring through daylight and maintained a presence until there was no threat to PA. An IMAAC model showed a potential impact to residences in PA if harmful chemicals were released from any of the derailed cars. Beaver County EMA Coordinator reported that they followed Columbiana County, Ohio's lead and a message was sent out to 16 registered users in the one-mile zone to shelter in place. Ohio later changed their message to an evacuation, but Beaver County remained as a shelter-in-place due to no residences being impacted. Shell Monaca provided green foam to help extinguish the fires. Clean-up contractors from SPSI and Hepaco responded to the scene. The shelter-in-place order remained in effect for Beaver County. Beaver County sent tankers from nine departments and an engine to assist in drafting from a lake in town once the railroad deemed it was safe. As of 2/5/23, Columbiana County, Ohio EMA recommended a one-mile evacuation around the incident due to one of the vinyl chloride rail cars showing a temperature increase. This included the 10 homes that were sheltering in place within Beaver County. On 2/6/23, all 20 homes in the PA evacuation zone were evacuated. Beaver County Animal Response Team (CART) requested assistance for trailers from Washington and Westmoreland counties to assist with the evacuation of farm animals from Kindred Spirits Rescue Farm. The recommended evacuation zone remained at one mile. The Pennsylvania Emergency Management Agency (PEMA) ordered a partial activation of the Commonwealth Response Coordination Center (CRCC) at 1100 hours and Beaver County Emergency Operations Center (EOC) partially activated. A planned controlled detonation was performed to empty five rail cars into a trench to burn off the vinyl chloride. Norfolk Southern established a Family Assistance Center for affected residents in New Waterford, Ohio; Beaver Valley Intermediate School remained open. On 2/7/23, the plume from the controlled detonation on 2/6/23 dissipated with no significant air detection identified by EPA Region 3 or PA DEP. Norfolk Southern conducted wrecking operations of damaged cars at the sight. Normal readings were reported by the Ohio Civil Support Team after monitoring the inside of three residences. The Ohio Department of Natural Resources reported approximately 1,800 fish killed within the streams and creeks that were affected. Air monitoring continued and there were no contaminants or concerns. The PEMA CRCC demobilized on 2/8/23 at 1600 hours. All roads that were closed in PA, including PA-51, were reopened. The Beaver County EOC deactivated at 1200 hours on 2/10/23. A public inquiry line remains operational. On 2/14/23, the EPA identified three other chemicals that were part of the train. They continued to monitor the air and waterways for contamination. On 2/23/23, PEMA, in conjunction with the Departments of Health (DOH) and Environmental Protection, launched a website to provide information to Commonwealth residents about the derailment. On 2/28/23, the Pennsylvania Department of Health opened a Health Resource Center in Darlington Township, Beaver County for residents of Beaver and Lawrence counties who have

health concerns following the Norfolk Southern train derailment. On 3/1/23, door-to-door surveys were conducted for 22 households within the 1-mile evacuation zone. Additional discussion led to a decision to do CDC outreach (door knocking) within the 2-mile radius in Pennsylvania, which began on 3/2/23. Approximately 450 healthcare providers participated in three webinars conducted on 2/28/23 and 3/1/23 for major medical providers in the Southwestern Region. Sample testing and review on Norfolk Southern soil sampling continued by Commonwealth agencies. The EPA Region 3 Director accompanied by staff, Pennsylvania Senator Casey, and Representative Deluzio toured the site on 3/2/23. On Monday, 3/6/23, Pennsylvania Governor Shapiro announced that Norfolk Southern has agreed to pay Pennsylvania millions of dollars for the impacts of the train derailment. Norfolk Southern agreed to reimburse local fire departments to replace contaminated or damaged equipment used during the response to the derailment, to provide funds for a Community Relief Fund to be run by officials in Beaver and Lawrence counties, and to reimburse state agencies (DEP, DOH, and PEMA) for associated costs. Norfolk Southern collected soil samples with representatives from the EPA present. Removal of the train tracks closest of Pennsylvania began over the weekend and was completed 3/5/23. Excavation of the contaminated soil began, and odors were expected to be released into the air. Air monitoring was increased during the process which is expected to take at least three to four days depending on the depth of the contaminants in the soil. The EPA requested Norfolk Southern to provide additional financial assistance to residents within one mile of the derailment site if they are impacted by the odors released during the excavation of the soil which the company has agreed too. Pennsylvania state agencies supported another East Palestine Community Resource Fair this Thursday at the East Palestine High School. Beaver County coordinated a separate Community Resource Fair for Pennsylvania residents for the following week which the state agencies supported. U.S. Senator Bob Casey completed a quick tour and talk at the Health Resource Center Monday morning. A Norfolk Southern contracted company sampled 16 private wells in Pennsylvania. DEP sampled 27 private wells in the area as of Monday with more sampling expected 3/7/23. On 3/8/23 DHS coordinated a call with Beaver and Lawrence counties about the possibility of applying for a Substance Abuse and Mental Health Services Administration (SAMHSA) Emergency Response Grant (SERG) to provide funding for additional behavioral health services that may be required following this incident. DOH and PEMA also participated in the call. Excavation work at the site was temporarily stopped due to elevated readings and release of odor. The excavation of the soil at the south tracks of the derailment site was mostly complete. As of 3/13/23, Norfolk Southern was waiting on soil samples to come back from the elevated spots that were detected. Due to contaminants being detected during the initial excavation at two to four inches, additional sampling was done at 12 to 15 inches to make sure all contaminated soil is removed. Soil excavation for the north track was still in the planning process. As of 3/16/23, the excavation of the soil at the south tracks of the derailment site was completed. The Health Resource Center (HRC) completed its final daily operational period at 1400, 3/16/23. The HRC moved to operations on Thursdays beginning 3/23/23. Excavation of the north track and removal of contaminated soil and water continued. OSHA joined the on-site operations to provide support to the safety officer and ensure that the community and personnel are safe during operations. EPA Region 5 conducted an information session focused on air quality and air monitoring on 4/27/23. EPA Region 5 conducted an information session focused on surface water on Thursday, May 11, at the Way Station and First United Presbyterian Church in East Palestine. As of 6/27/23, excavation underneath Pleasant Drive was complete, and the roadway was opened for traffic on 6/28/23. Contamination underneath the north and south tracks was removed, and both tracks are fully operational. As of 7/11/23, surface and ground water sampling plans for the remainder of the cleanup have been approved by EPA. In addition, gravel was laid on the turnaround on East Martin Street in preparation for asphalt to help control erosion and dust. A site storm water inspection was conducted, and additional storm water controls were put into place to improve the existing storm water management plan. EPA hosted a site progress information session

on 7/20/23 at the First United Presbyterian Church in East Palestine. Activities are ongoing. As of 7/31/23, Norfolk Southern offered help with indoor cleaning for homes and business for those within the one-to-two-mile Ohio-Pennsylvania evacuation zone. As of 3/22/24, the EPA and PA DEP continue to monitor wells in the area.

CLOSED:

GAS LEAK NEAR NURSING HOME – Lehigh County, 5/22/24 - A construction crew struck a gas main at Luther Crest Nursing Home located at 800 Hausman Road in South Whitehall Township. UGI was on location to secure the leak. 28 residents were relocated from the Personal Care and Memory Care facilities to the Health Care facility, which is on a different part of the property. UGI cleared the building and occupants were able to return shortly after.

SHOOTING – Delaware County, 5/22/24 - Police responded to a business at 2626 West 4th Street in Chester City for a shooting. The suspect was apprehended with a firearm recovered. There were four transported to Crozer Chester Medical Center and two deceased.

ROAD CLOSURE – Dauphin, 5/22/24 – At 1035, a downed pole and wires closed both directions of US-22/322 between PA 147 and US 11/15 in Reed Township. During repair work, PPL had a pole and wires fall. No injuries were reported. PennDOT was requested for traffic control. The eastbound lanes opened around 1750 followed by the westbound lanes an hour later.

APARTMENT FIRE – Philadelphia County, 5/5/24 – A second floor apartment fire occurred at the Terrace Apartments, a four-story 100+ unit building, located in the 4900 block of Spruce Street in the City of Philadelphia. Over 100 residents were evacuated from the structure. The American Red Cross and Salvation Army established a relief area at the Beulah Baptist Church for the displaced occupants. Two occupants of the apartment were removed, but it is unknown the extent of their injuries or if they were transported to the hospital. Property management determined the building was uninhabitable due to fire, smoke, and water damage. 29 displaced residents were transported by a bus from the Southeastern Pennsylvania Transportation Authority (SEPTA) to a shelter established at the West Philadelphia High School. Spruce Street, between 48th and 52nd Streets, was closed. There were no reports of HAZMAT. In addition to the emergency response agencies, multiple agencies responded to the scene; currently, Philadelphia OEM, the American Red Cross, the Salvation Army, school police, facilities and emergency management are on location at the shelter. On 5/10/24 the shelter operations transferred from West Philadelphia High School to the OEM Welcome Center on Luzerne Street. The city plans to support residents in locating alternate housing by holding a Multi-Agency Resource Center (MARC) on Wednesday, May 15 and Thursday, May 16. State agency support is requested from PEMA, Health, Human Services, Pennsylvania Housing and Finance Agency, Transportation, and Military and Veterans Affairs. The MARC for displaced residents was held at the Victory Christian Center located at 5220 Whitby Avenue in Philadelphia and operated from 1200 to 2000 hours on 5/15/24 and 5/16/24. 68 residents utilized the resources available at the MARC. A Mass Care conference call was held at 1330 hours on 5/17/24. As of 5/17/24 seven residents remain at the shelter. On 5/21/24 shelter operations concluded and the incident was closed.

DISASTER DECLARATIONS:

5/11/24 - Union Township, Washington County has issued a Declaration of Disaster Emergency due to adverse weather.

4/23/24 - Hopewell Township, Beaver County has issued a Declaration of Disaster Emergency due to adverse weather.

4/18/24 - South Buffalo Township, Armstrong County has issued a Declaration of Disaster Emergency due to adverse weather on 4/11/24 and 4/12/24.

4/11/24 - Canton Township, Washington County has issued a Declaration of Disaster Emergency due to adverse weather.

4/11/24 - Oakdale Borough, Allegheny County has issued a Declaration of Disaster Emergency due to adverse weather.

4/10/24 - Jefferson Township, Greene County has issued a Declaration of Disaster Emergency due to adverse weather.

4/10/24 - Jackson Township, Greene County has issued a Declaration of Disaster Emergency due to adverse weather.

4/10/24 - Perry Township, Greene County has issued a Declaration of Disaster Emergency due to adverse weather.

4/10/24 - Wayne Township, Greene County has issued a Declaration of Disaster Emergency due to adverse weather.

4/10/24 - Center Township, Greene County has issued a Declaration of Disaster Emergency due to adverse weather.

4/9/24 - Aleppo Township, Greene County has issued a Declaration of Disaster Emergency due to adverse weather.

4/8/24 - Washington Township, Greene County has issued a Declaration of Disaster Emergency due to adverse weather.

4/8/24 - Richhill Township, Greene County has issued a Declaration of Disaster Emergency due to adverse weather.

4/5/24 - Gilmore Township, Greene County has issued a Declaration of Disaster Emergency due to adverse weather.

4/4/24 - Nippenose Township, Lycoming County has issued a Declaration of Disaster Emergency due to adverse weather.

4/4/24 - Deemston Borough, Washington County has issued a Declaration of Disaster Emergency due to adverse weather.

4/4/24 - Marianna Borough, Washington County has issued a Declaration of Disaster Emergency due to adverse weather.

4/3/24 - Red Stone Township, Fayette County has issued a Declaration of Disaster Emergency due to adverse weather.

4/3/24 – German Township, Fayette County has issued a Declaration of Disaster Emergency due to adverse weather.

4/3/24 – Brownsville Borough, Fayette County has issued a Declaration of Disaster Emergency due to adverse weather.

4/3/24 – Bentleyville Borough, Washington County has issued a Declaration of Disaster Emergency due to adverse weather.

4/3/24 – Punxsutawney Borough, Jefferson County has issued a Declaration of Disaster Emergency due to adverse weather.

2/13/24 – Millersburg Borough has issued a Declaration of Disaster Emergency due to power outages affecting independent living facilities and apartments on 2/13/24.

9/25/23 – Blawnox Borough, Allegheny County has issued a Declaration of Disaster Emergency due to a water main break and damages to Freeport Road.

9/23/23 – Oxford Borough, Chester County has issued a Continuation of the Declaration of Disaster Emergency due to the multi-building structure fire on 9/13/23.

9/19/23 – Fairchance Borough, Fayette County issued a Declaration of Disaster Emergency due to a dam issue that has caused or threatens to cause injury, damage, and suffering to the persons and property of Fairchance Borough on or about 9/19/23.

9/14/23 – Oxford Borough, Chester County has issued a Declaration of Disaster Emergency due to the multi-building structure fire on 9/13/23.

9/13/23 – Clifford Township, Susquehanna County issued a Declaration of Disaster Emergency due to adverse weather on 8/18/23.

9/10/23 – Lackawanna County has issued a Declaration of Disaster Emergency due to the severe thunderstorms and flooding of 9/9/23 through 9/10/23.

08/24/23 – Forest Lake Township, Susquehanna County, issued a Declaration of Disaster Emergency due to adverse weather on 8/18/23.

08/23/23 – New Milford Township, Susquehanna County, issued a Declaration of Disaster Emergency due to adverse weather on 8/18/23.

08/23/23 – Harford Township, Susquehanna County, issued a Declaration of Disaster Emergency due to adverse weather on 8/18/23.

08/23/23 – Susquehanna Depot Borough, Susquehanna County, issued a Declaration of Disaster Emergency due to adverse weather on 8/18/23.

08/18/23 – Rush Township, Susquehanna County, issued a Declaration of Disaster Emergency due to adverse weather on 8/18/23.

08/18/23 – Susquehanna County issued a Declaration of Disaster Emergency due to adverse weather on 8/18/23.

8/14/23 – Plum Borough, Allegheny County, issued a Declaration of Disaster Emergency due to a house explosion on 8/13/23.

6/16/23 – West Caln Township, Chester County issued a Declaration of Disaster Emergency due to adverse weather and storm damage throughout the township on 6/16/23.

6/12/23 - Governor Josh Shapiro issued a proclamation of disaster emergency for Philadelphia County in response to the I-95 fire and collapse on 6/11/23. The governor's proclamation makes \$7 million of state funds immediately available for the reconstruction of the roadway and authorizes the Pennsylvania Emergency Management Agency, the Department of Transportation, and the Pennsylvania State Police to use all available resources and personnel, as necessary. This proclamation will remain in place for 21 days, unless extended by the Legislature.

9/10/21 - The Honorable Tom Wolf, Governor of the Commonwealth of Pennsylvania, requested a major disaster declaration from the President through the Federal Emergency Management Agency to provide additional support for state, county and municipal governments, and individuals affected by the remnants of Hurricane IDA between 8/31/21 and 9/5/21. The declaration includes Individual Assistance to individuals and households in Bucks, Chester, Delaware, Montgomery, Philadelphia, and York counties, and assistance under the Hazard Mitigation Grant Program in all areas of the Commonwealth. Public Assistance is under review. The President approved the declaration on 9/10/21 under Major Disaster Declaration FEMA-4618-DR. 9/24/21 – Amendment No. 1 designates Bedford and Northampton counties for Individual Assistance. 10/8/21 – Amendment No. 2 designates Bucks, Chester, and Montgomery counties for Public Assistance (already designated for Individual Assistance). 10/14/21 – Amendment No. 3 designates Bedford, Philadelphia, and York counties for Public Assistance (already designated for Individual Assistance). Plus, Fulton, Huntingdon, Luzerne, and Schuylkill counties for Public Assistance. 10/20/21 – Amendment No. 4 designates Delaware County for Public Assistance (already designated for Individual Assistance), and Dauphin County for Public Assistance.

8/31/21 - The Honorable Tom Wolf, Governor of the Commonwealth of Pennsylvania, signed a statewide Proclamation of Disaster Emergency on 8/31/21 in response to severe weather event Hurricane Ida that impacted the Commonwealth of Pennsylvania causing widespread threats of serious flash and riverine flooding and other adverse impacts throughout the Commonwealth.

3/30/20 - Governor Tom Wolf requested a major disaster declaration from the President through the Federal Emergency Management Agency to provide additional support for state, county and municipal governments and certain nonprofits, as well as individuals who are struggling during the COVID-19 outbreak. The request for a major disaster declaration will provide the same emergency protective measures available under the nationwide emergency proclamation; the following Individual Assistance programs: Disaster Unemployment Assistance, Crisis Counseling, Community Disaster Loans, and the Disaster Supplemental Nutrition Program; and Statewide Hazard Mitigation. The President approved the declaration on 3/30/20 under Major Disaster Declaration FEMA-4506-DR.

11/27/18 – A Major Disaster Declaration was declared on 11/27/18 for severe storms and flooding that occurred 8/10/18 – 8/15/18. Public Assistance (Cat A-G) was approved for Bradford, Columbia, Lackawanna, Lycoming, Montour, Northampton, Schuylkill, Sullivan, Susquehanna, Tioga, and Wyoming counties. In addition, all areas in the Commonwealth of Pennsylvania are eligible for assistance under the Hazard Mitigation Grant Program. The designation is FEMA-4408-DR.

CONTIGUOUS STATE EVENTS OF POTENTIAL INTEREST TO PENNSYLVANIA:

Delaware:	Normal Operations
Maryland:	Partial Activation - Francis Scott Key Bridge Collapse
New Jersey:	Normal Operations
New York:	Limited Activation - Higher Education Commencement Activities
Ohio:	Normal Operations
West Virginia:	Normal Operations

24-Hour Projected Weather Statewide:

National Weather Service, 0543 hours, 5/23/24

A potent upper level disturbance moving over the region ahead of an approaching cold front will bring a two to three-hour period of briefly heavy showers and thunderstorms with locally strong gusty winds and small hail during the mid-morning hours across Central Pennsylvania and portions of the Middle and Lower Susquehanna Valley.

The cold front will drop south of the Mason/Dixon line later this afternoon, followed by partial clearing with notably lower humidity as the light to moderate breeze switches to the northwest.

High temperatures will be a few degrees cooler than on Wednesday, ranging from the mid and upper 70s respectively across the Laurel Highlands and Northern Mountains to low 80s throughout the valleys of Central and Southern PA.

Sunny and pleasantly warm conditions with low humidity will spread across much of the region for Friday, though some clouds and a stray shower is possible across the southern tier counties of the Commonwealth.

An uptick in clouds and humidity will bring some periods of unsettled weather as we head through the weekend and Memorial Day.

WATCHES AND WARNINGS:

A severe thunderstorm warning has been issued until 0615 hours for the following counties: Centre, Juniata, Mifflin, Snyder, Union

A severe thunderstorm warning has been issued until 0645 hours for the following counties: Bucks, Montgomery, Philadelphia



Current Watches, Warnings, and Advisories



TROPICAL WEATHER OUTLOOK:



Two-Day Graphical Tropical Weather Outlook

National Hurricane Center Miami, Florida

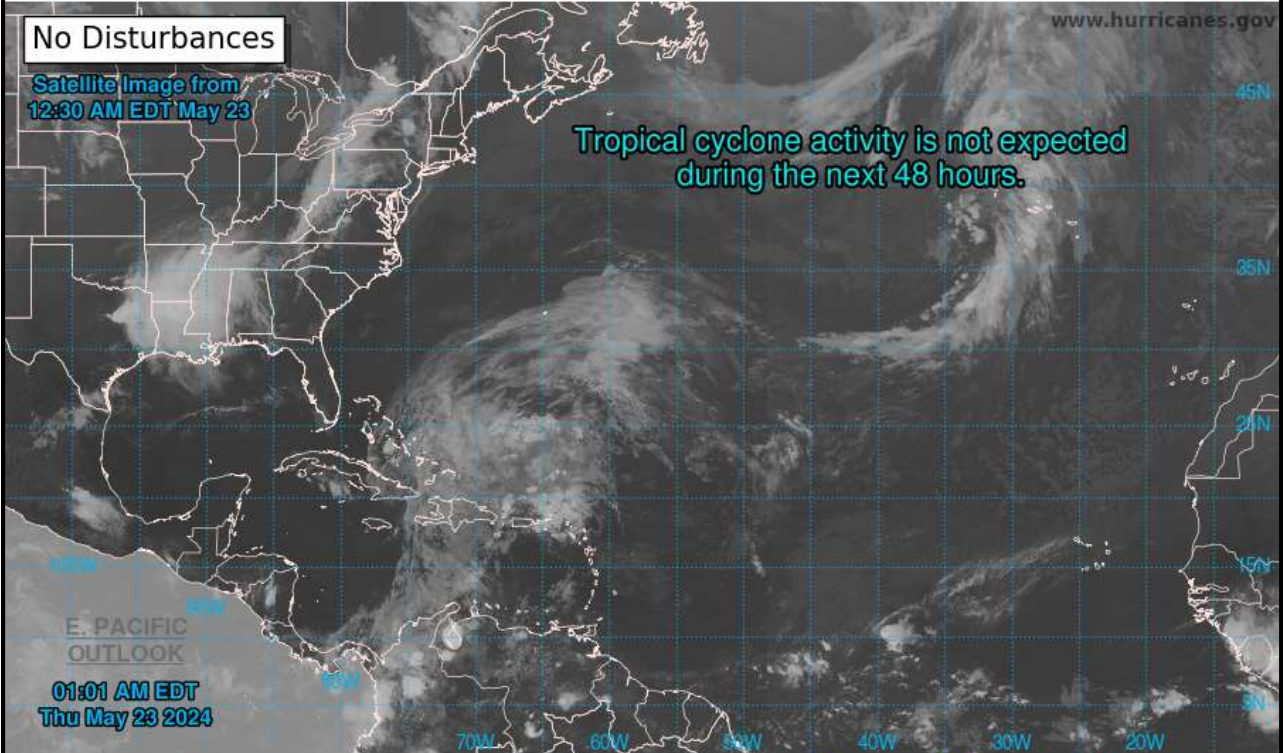


www.hurricanes.gov

No Disturbances

Satellite Image from
12:30 AM EDT May 23

Tropical cyclone activity is not expected
during the next 48 hours.



E. PACIFIC
OUTLOOK

01:01 AM EDT
Thu May 23 2024

Current Disturbances and Two-Day Cyclone Formation Chance: < 40% 40-60% > 60%
Tropical or Sub-Tropical Cyclone: Depression Storm Hurricane
 Post-Tropical Cyclone or Remnants