



OFFICE OF THE DIRECTOR

DATE:

June 27, 2024

TO:

The Honorable Josh Shapiro
Governor
Commonwealth of Pennsylvania

FROM:

Randy Padfield
Director, PA Emergency Management Agency

TIME PERIOD:

This report covers the period from 0600 hours, June 26, 2024, through 0600 hours, June 27, 2024.

STATUS REPORT: (as of 0600 hours)

THREAT STATUS:

National Terrorism Advisory System: There are no current advisories.

Commonwealth Response Coordination Center (CRCC) Status: Normal Operations

County EOC Activations: Northampton County (Level 3) for adverse weather

Municipal EOC Activations: None

CAPABILITIES STATUS:

PA All-Hazards Type-3 Incident Management / Team – Mission Capable

PA-Task Force 1 (PA-TF1) – Mission Capable – One planner with PA-TF1 (Blue IST) is deployed in support of the New Mexico Wildfires

INFRASTRUCTURE STATUS:

Major Road Closures: None

Power Outage Reports: As of 0600 hours, 82,394 customers

Telephone Outage Reports: 136 Frontier customers in Centre Township, Berks County

SIGNIFICANT EVENTS:

OPEN:

ADVERSE WEATHER – SEVERE STORMS – Statewide, 6/26/24 – Severe thunderstorms stretched across the Commonwealth throughout the afternoon and evening hours, bringing high winds and heavy rainfall, and prompting numerous Severe Thunderstorm, Tornado, and Flash Flood Warnings. There were many reports of trees and wires down, flooded roadways, as well as multiple road closures throughout the state. Westmoreland and Northampton Counties activated their emergency operations centers (EOCs), along with several municipal EOCs, to support the response efforts. All EOCs in Westmoreland stood down overnight. Multiple public safety radio system tower sites in Westmoreland and Northampton Counties are running on generator power due to commercial power loss. Radio coverage has not been affected. Lehigh Valley Hospital Schuylkill East Campus was without power beginning at 1800 hours, causing their emergency room to go on divert, and threatening a loss of pharmacy supplies. The Public Utility Commission (PUC) was contacted to assist in getting power restored, and it has since been restored. Power outages across the state peaked at over 147,000, but have been steadily declining as crews restore power. Building damage has also been reported across the Commonwealth to homes and farms, as well as damage to a PennDOT shed on Sandy Hill Road in Westmoreland County. Personnel from the National Weather Service (NWS) will be inspecting storm damage to see if tornadoes were the cause in various counties.

A/C ISSUES AT SKILLED NURSING CENTER – Berks County, 6/19/24 – The West Reading Skilled Nursing and Rehab Center at 425 Buttonwood Street in West Reading Borough is having internal issues causing intermittent A/C failure. The facility has made purchases and rentals to meet their needs and does not require any outside resources. There have been no evacuations. The Coalition Manager for the Central Regional Healthcare Coalition advised that they were moving assets to support the AC needs at the facility.

ADVERSE WEATHER – EXTREME HEAT –Statewide, 6/17/24 – Severe thunderstorms and high heat crossed into the Commonwealth leading to a high number of power outages. Power outages peaked around 110,000 into the evening but have begun to recede. Cooling shelters have been opened in Clarion, Dauphin, Greene, Washington, and Westmoreland Counties. At 0800 on 6/18/24 the Commonwealth Watch and Warning Center moved to Enhanced Operations due to the heat. Additional cooling shelters opened throughout Pennsylvania as another day of heat impacted the Commonwealth. Power outage issues stabilized and receded closer to June norms with repairs continuing to be addressed. On 6/19/24, Lebanon and Washington Counties opened additional cooling shelters. On 6/20/24, the Kinzu Valley Healthcare (nursing home), 205 Water Street, City of Warren, Warren County, had a partial HVAC failure in the Alzheimer’s Unit. Facility maintenance is working to restore the system. Patients were moved into a therapy area. The Clinton County Housing Authority’s residential units at 9th Street in Renovo Borough, Clinton County experienced a power outage affecting 40 residents. Residents were move to vacant units that still have power. The Claremont Nursing and Rehabilitation facility at 1000 Claremont Road in Middlesex Township, Cumberland County experienced failure of an air conditioning unit affecting one wing/floor of 50 patients. Six one-ton A/C units have been rented and installed. On 6/22/24, Fayette County 911 dispatched an EMS unit to the Analisa personal care home (PCH) at 414 Perry Road in Jefferson Township, Fayette County, for a 79-year-old female found face down on the floor and bleeding from her elbow. When the EMS unit arrived, they found the residents of the PCH in the common room with a fan because the HVAC system had failed. The injured resident was transported to a hospital for evaluation and treatment. The owner of the facility advised that he will not allow the residents to be transported to a cooling shelter. He also stated that he does not have the funds to have the HVAC unit repaired and that personal air conditioning units were not permitted. The PA Department of Human Services was notified. The Clinton County housing authority units at 9th Street in Renovo Borough, Clinton County, had their power restored and the residents have returned to their apartments. In

Cumberland County, Claremont Nursing and Rehabilitation maintenance purchased window air conditioners and installed them in the patients' rooms. Repairs to the HVAC are ongoing. The Watch returned to normal operations. As of 6/23/24, higher temperatures continued throughout the Commonwealth Sunday with spotted storms crossing Pennsylvania. These storms spurred on Tornado Warnings for Washington, Greene, and Fayette counties which were all were allowed to expire.

WATER LEAK – Lancaster County, 6/1/24 - A 3/4" cap on a water line broke on the 3rd floor of the Lancaster County Government Building, 150 North Queen Street in the City of Lancaster. The leak caused water damage to the 3rd floor as well as the floors below. A damage assessment was conducted by the Emergency Management staff, the County Facilities Director, and Complete Restoration. On 6/2/24, the County Commissioners decided to close the government center on Monday, 6/3/24, while evaluation of water damage in the building continues. The center reopened to the public on 6/10/24, but many of the offices are out of their normal locations and the facility is still in recovery mode.

ROAD CLOSURE DUE TO SUBSIDENCE – Cambria County, 4/25/24 - An engineer for West Taylor Township contacted the county EMA about subsidence of the roadway in the 100 block of Batzel Road. Emergency management staff responded and noted considerable subsidence of the roadway. This is reportedly an ongoing issue where the township lays down new asphalt as a temporary measure. Electrical service and a cable line are pulled tight between the nearby residence and a utility pole which seems to have shifted. There is also considerable twisting of the guardrail. Cement barriers will be requested to close the roadway. There are no residents that are currently affected by this closure. There will be a minor detour for emergency vehicles. Engineers are working with the township to develop a long-term repair plan.

TRAIN DERAILMENT – Columbiana County, Ohio, 2/3/23 - On 2/3/23 at 2130 hours, mutual aid crews from Beaver County responded to a train derailment near Taggart Street, East Palestine, Ohio. Approximately 53 railcars derailed and some of them caught fire. There were five cars of vinyl chloride within the wreckage. Around 2330 hours a call was received from an Environmental Protection Agency (EPA) Region 3 representative, and they advised there was no current impact to PA. EPA Region 5 and Ohio EPA set up air monitoring equipment and they also used handheld monitors, and nothing was detected. Members of the PA Department of Environmental Protection (DEP) Southwest Regional Office were also onsite monitoring through daylight and maintained a presence until there was no threat to PA. An IMAAC model showed a potential impact to residences in PA if harmful chemicals were released from any of the derailed cars. Beaver County EMA Coordinator reported that they followed Columbiana County, Ohio's lead and a message was sent out to 16 registered users in the one-mile zone to shelter in place. Ohio later changed their message to an evacuation, but Beaver County remained as a shelter-in-place due to no residences being impacted. Shell Monaca was provided green foam to help extinguish the fires. Clean-up contractors from SPSI and Hepaco responded to the scene. The shelter-in-place order remained in effect for Beaver County. Beaver County sent tankers from nine departments and an engine to assist in drafting from a lake in town once the railroad deemed it was safe. As of 2/5/23, Columbiana County, Ohio EMA recommended a one-mile evacuation around the incident due to one of the vinyl chloride rail cars showing a temperature increase. This included the 10 homes that were sheltering in place within Beaver County. On 2/6/23, all 20 homes in the PA evacuation zone were evacuated. Beaver County Animal Response Team (CART) requested assistance for trailers from Washington and Westmoreland counties to assist with the evacuation of farm animals from Kindred Spirits Rescue Farm. The recommended evacuation zone remained at one mile. The Pennsylvania Emergency Management Agency (PEMA) ordered a partial activation of the Commonwealth Response Coordination Center (CRCC) at 1100 hours and

Beaver County Emergency Operations Center (EOC) partially activated. A planned controlled detonation was performed to empty five rail cars into a trench to burn off the vinyl chloride. Norfolk Southern established a Family Assistance Center for affected residents in New Waterford, Ohio; Beaver Valley Intermediate School remained open. On 2/7/23, the plume from the controlled detonation on 2/6/23 dissipated with no significant air detection identified by EPA Region 3 or PA DEP. Norfolk Southern conducted wrecking operations of damaged cars at the sight. Normal readings were reported by the Ohio Civil Support Team after monitoring the inside of three residences. The Ohio Department of Natural Resources reported approximately 1,800 fish killed within the streams and creeks that were affected. Air monitoring continued and there were no contaminants or concerns. The PEMA CRCC demobilized on 2/8/23 at 1600 hours. All roads that were closed in PA, including PA-51, were reopened. The Beaver County EOC deactivated at 1200 hours on 2/10/23. A public inquiry line remains operational. On 2/14/23, the EPA identified three other chemicals that were part of the train. They continued to monitor the air and waterways for contamination. On 2/23/23, PEMA, in conjunction with the Departments of Health (DOH) and Environmental Protection, launched a website to provide information to Commonwealth residents about the derailment. On 2/28/23, the Pennsylvania Department of Health opened a Health Resource Center in Darlington Township, Beaver County for residents of Beaver and Lawrence counties who have health concerns following the Norfolk Southern train derailment. On 3/1/23, door-to-door surveys were conducted for 22 households within the 1-mile evacuation zone. Additional discussion led to a decision to do CDC outreach (door knocking) within the 2-mile radius in Pennsylvania, which began on 3/2/23. Approximately 450 healthcare providers participated in three webinars conducted on 2/28/23 and 3/1/23 for major medical providers in the Southwestern Region. Sample testing and review on Norfolk Southern soil sampling continued by Commonwealth agencies. The EPA Region 3 Director accompanied by staff, Pennsylvania Senator Casey, and Representative Deluzio toured the site on 3/2/23. On Monday, 3/6/23, Pennsylvania Governor Shapiro announced that Norfolk Southern has agreed to pay Pennsylvania millions of dollars for the impacts of the train derailment. Norfolk Southern agreed to reimburse local fire departments to replace contaminated or damaged equipment used during the response to the derailment, to provide funds for a Community Relief Fund to be run by officials in Beaver and Lawrence counties, and to reimburse state agencies (DEP, DOH, and PEMA) for associated costs. Norfolk Southern collected soil samples with representatives from the EPA present. Removal of the train tracks closest of Pennsylvania began over the weekend and was completed 3/5/23. Excavation of the contaminated soil began, and odors were expected to be released into the air. Air monitoring was increased during the process which is expected to take at least three to four days depending on the depth of the contaminants in the soil. The EPA requested Norfolk Southern to provide additional financial assistance to residents within one mile of the derailment site if they are impacted by the odors released during the excavation of the soil which the company has agreed too. Pennsylvania state agencies supported another East Palestine Community Resource Fair this Thursday at the East Palestine High School. Beaver County coordinated a separate Community Resource Fair for Pennsylvania residents for the following week which the state agencies supported. U.S. Senator Bob Casey completed a quick tour and talk at the Health Resource Center Monday morning. A Norfolk Southern contracted company sampled 16 private wells in Pennsylvania. DEP sampled 27 private wells in the area as of Monday with more sampling expected 3/7/23. On 3/8/23 DHS coordinated a call with Beaver and Lawrence counties about the possibility of applying for a Substance Abuse and Mental Health Services Administration (SAMHSA) Emergency Response Grant (SERG) to provide funding for additional behavioral health services that may be required following this incident. DOH and PEMA also participated in the call. Excavation work at the site was temporarily stopped due to elevated readings and release of odor. The excavation of the soil at the south tracks of the derailment site was mostly complete. As of 3/13/23, Norfolk Southern was waiting on soil samples to come back from the elevated spots that were detected. Due to contaminants being

detected during the initial excavation at two to four inches, additional sampling was done at 12 to 15 inches to make sure all contaminated soil is removed. Soil excavation for the north track was still in the planning process. As of 3/16/23, the excavation of the soil at the south tracks of the derailment site was completed. The Health Resource Center (HRC) completed its final daily operational period at 1400, 3/16/23. The HRC moved to operations on Thursdays beginning 3/23/23. Excavation of the north track and removal of contaminated soil and water continued. OSHA joined the on-site operations to provide support to the safety officer and ensure that the community and personnel are safe during operations. EPA Region 5 conducted an information session focused on air quality and air monitoring on 4/27/23. EPA Region 5 conducted an information session focused on surface water on Thursday, May 11, at the Way Station and First United Presbyterian Church in East Palestine. As of 6/27/23, excavation underneath Pleasant Drive was complete, and the roadway was opened for traffic on 6/28/23. Contamination underneath the north and south tracks was removed, and both tracks are fully operational. As of 7/11/23, surface and ground water sampling plans for the remainder of the cleanup have been approved by EPA. In addition, gravel was laid on the turnaround on East Martin Street in preparation for asphalt to help control erosion and dust. A site storm water inspection was conducted, and additional storm water controls were put into place to improve the existing storm water management plan. EPA hosted a site progress information session on 7/20/23 at the First United Presbyterian Church in East Palestine. Activities are ongoing. As of 7/31/23, Norfolk Southern offered help with indoor cleaning for homes and business for those within the one-to-two-mile Ohio-Pennsylvania evacuation zone. As of 3/22/24, the EPA and PA DEP continue to monitor wells in the area.

CLOSED:

MISSING ENDANGERED PERSON ADVISORY (MEPA) – Erie County, 6/26/24 – The Pennsylvania State Police (PSP) Erie Station issued a MEPA for an 81-year-old male who was last seen in the area of Iroquois Avenue, Harborcreek Township on 6/25/24 at 1700 hours. He was located safe on 6/26/24.

ROAD CLOSURE – Lehigh County, 6/26/24 – A fatal accident, involving a motorcycle and a tractor trailer, occurred on I-78 east at mile marker 58.4 in Allentown City, closing all eastbound lanes of the highway. The detour was a ¼ of a mile and the backlog was 2.5 miles. An effective detour was established at Cedar Crest Boulevard. No accident reconstruction was conducted. The roadway reopened after 3.75 hours.

CUMMINGS LUMBER MILL FIRE – Bradford County, 6/26/24 – Units responded to a three-alarm structure fire at the Cummings Lumber main sawmill building, 21756 Route 14 in Troy Township. Crews were assisted by units from Tioga and Sullivan Counties, Chemung County, New York, the county HazMat, drone, and rehab teams. The Troy Fire Department remained on scene for the arrival of the Fire Marshall and watched for potential flare ups. Fish and Boat and DEP were notified of oil runoff into the North Branch of Sugar Creek. DEP NCRO reported the oil spill was contained, and an assessment of the incident site was conducted during daylight hours. T and R Environmental was contacted for remediation. PA-14 was closed between PA-4016 and PA-6 for fire operations but has since reopened.

DISASTER DECLARATIONS:

6/7/24 – City of Pittsburgh, Allegheny County has issued a Declaration of Disaster Emergency due to a multi-residential structure fire at the 2nd Avenue Commons Shelter on 6/4/24.

5/27/24 – Mahanoy City Borough issued a Declaration of Disaster due to adverse weather.

5/11/24 - Union Township, Washington County has issued a Declaration of Disaster Emergency due to adverse weather.

4/23/24 - Hopewell Township, Beaver County has issued a Declaration of Disaster Emergency due to adverse weather.

4/18/24 - South Buffalo Township, Armstrong County has issued a Declaration of Disaster Emergency due to adverse weather on 4/11/24 and 4/12/24.

4/11/24 - Canton Township, Washington County has issued a Declaration of Disaster Emergency due to adverse weather.

4/11/24 - Oakdale Borough, Allegheny County has issued a Declaration of Disaster Emergency due to adverse weather.

4/10/24 - Jefferson Township, Greene County has issued a Declaration of Disaster Emergency due to adverse weather.

4/10/24 - Jackson Township, Greene County has issued a Declaration of Disaster Emergency due to adverse weather.

4/10/24 - Perry Township, Greene County has issued a Declaration of Disaster Emergency due to adverse weather.

4/10/24 - Wayne Township, Greene County has issued a Declaration of Disaster Emergency due to adverse weather.

4/10/24 - Center Township, Greene County has issued a Declaration of Disaster Emergency due to adverse weather.

4/9/24 - Aleppo Township, Greene County has issued a Declaration of Disaster Emergency due to adverse weather.

4/8/24 - Washington Township, Greene County has issued a Declaration of Disaster Emergency due to adverse weather.

4/8/24 - Richhill Township, Greene County has issued a Declaration of Disaster Emergency due to adverse weather.

4/5/24 - Gilmore Township, Greene County has issued a Declaration of Disaster Emergency due to adverse weather.

4/4/24 - Nippenose Township, Lycoming County has issued a Declaration of Disaster Emergency due to adverse weather.

4/4/24 - Deemston Borough, Washington County has issued a Declaration of Disaster Emergency due to adverse weather.

4/4/24 - Marianna Borough, Washington County has issued a Declaration of Disaster Emergency due to adverse weather.

4/3/24 - Red Stone Township, Fayette County has issued a Declaration of Disaster Emergency due to adverse weather.

4/3/24 – German Township, Fayette County has issued a Declaration of Disaster Emergency due to adverse weather.

4/3/24 – Brownsville Borough, Fayette County has issued a Declaration of Disaster Emergency due to adverse weather.

4/3/24 – Bentleyville Borough, Washington County has issued a Declaration of Disaster Emergency due to adverse weather.

4/3/24 – Punxsutawney Borough, Jefferson County has issued a Declaration of Disaster Emergency due to adverse weather.

2/13/24 – Millersburg Borough has issued a Declaration of Disaster Emergency due to power outages affecting independent living facilities and apartments on 2/13/24.

9/25/23 – Blawnox Borough, Allegheny County has issued a Declaration of Disaster Emergency due to a water main break and damages to Freeport Road.

9/23/23 – Oxford Borough, Chester County has issued a Continuation of the Declaration of Disaster Emergency due to the multi-building structure fire on 9/13/23.

9/19/23 – Fairchance Borough, Fayette County issued a Declaration of Disaster Emergency due to a dam issue that has caused or threatens to cause injury, damage, and suffering to the persons and property of Fairchance Borough on or about 9/19/23.

9/14/23 – Oxford Borough, Chester County has issued a Declaration of Disaster Emergency due to the multi-building structure fire on 9/13/23.

9/13/23 – Clifford Township, Susquehanna County issued a Declaration of Disaster Emergency due to adverse weather on 8/18/23.

9/10/23 – Lackawanna County has issued a Declaration of Disaster Emergency due to the severe thunderstorms and flooding of 9/9/23 through 9/10/23.

08/24/23 – Forest Lake Township, Susquehanna County, issued a Declaration of Disaster Emergency due to adverse weather on 8/18/23.

08/23/23 – New Milford Township, Susquehanna County, issued a Declaration of Disaster Emergency due to adverse weather on 8/18/23.

08/23/23 – Harford Township, Susquehanna County, issued a Declaration of Disaster Emergency due to adverse weather on 8/18/23.

08/23/23 – Susquehanna Depot Borough, Susquehanna County, issued a Declaration of Disaster Emergency due to adverse weather on 8/18/23.

08/18/23 – Rush Township, Susquehanna County, issued a Declaration of Disaster Emergency due to adverse weather on 8/18/23.

08/18/23 – Susquehanna County issued a Declaration of Disaster Emergency due to adverse weather on 8/18/23.

8/14/23 – Plum Borough, Allegheny County, issued a Declaration of Disaster Emergency due to a house explosion on 8/13/23.

6/16/23 – West Caln Township, Chester County issued a Declaration of Disaster Emergency due to adverse weather and storm damage throughout the township on 6/16/23.

6/12/23 - Governor Josh Shapiro issued a proclamation of disaster emergency for Philadelphia County in response to the I-95 fire and collapse on 6/11/23. The governor's proclamation makes \$7 million of state funds immediately available for the reconstruction of the roadway and authorizes the Pennsylvania Emergency Management Agency, the Department of Transportation, and the Pennsylvania State Police to use all available resources and personnel, as necessary. This proclamation will remain in place for 21 days, unless extended by the Legislature.

9/10/21 - The Honorable Tom Wolf, Governor of the Commonwealth of Pennsylvania, requested a major disaster declaration from the President through the Federal Emergency Management Agency to provide additional support for state, county and municipal governments, and individuals affected by the remnants of Hurricane IDA between 8/31/21 and 9/5/21. The declaration includes Individual Assistance to individuals and households in Bucks, Chester, Delaware, Montgomery, Philadelphia, and York counties, and assistance under the Hazard Mitigation Grant Program in all areas of the Commonwealth. Public Assistance is under review. The President approved the declaration on 9/10/21 under Major Disaster Declaration FEMA-4618-DR. 9/24/21 – Amendment No. 1 designates Bedford and Northampton counties for Individual Assistance. 10/8/21 – Amendment No. 2 designates Bucks, Chester, and Montgomery counties for Public Assistance (already designated for Individual Assistance). 10/14/21 – Amendment No. 3 designates Bedford, Philadelphia, and York counties for Public Assistance (already designated for Individual Assistance). Plus, Fulton, Huntingdon, Luzerne, and Schuylkill counties for Public Assistance. 10/20/21 – Amendment No. 4 designates Delaware County for Public Assistance (already designated for Individual Assistance), and Dauphin County for Public Assistance.

8/31/21 - The Honorable Tom Wolf, Governor of the Commonwealth of Pennsylvania, signed a statewide Proclamation of Disaster Emergency on 8/31/21 in response to severe weather event Hurricane Ida that impacted the Commonwealth of Pennsylvania causing widespread threats of serious flash and riverine flooding and other adverse impacts throughout the Commonwealth.

3/30/20 - Governor Tom Wolf requested a major disaster declaration from the President through the Federal Emergency Management Agency to provide additional support for state, county and municipal governments and certain nonprofits, as well as individuals who are struggling during the COVID-19 outbreak. The request for a major disaster declaration will provide the same emergency protective measures available under the nationwide emergency proclamation; the following Individual Assistance programs: Disaster Unemployment Assistance, Crisis Counseling, Community Disaster Loans, and the Disaster Supplemental Nutrition Program; and Statewide Hazard Mitigation. The President approved the declaration on 3/30/20 under Major Disaster Declaration FEMA-4506-DR.

11/27/18 – A Major Disaster Declaration was declared on 11/27/18 for severe storms and flooding that occurred 8/10/18 – 8/15/18. Public Assistance (Cat A-G) was approved for Bradford, Columbia, Lackawanna, Lycoming, Montour, Northampton, Schuylkill, Sullivan,

Susquehanna, Tioga, and Wyoming counties. In addition, all areas in the Commonwealth of Pennsylvania are eligible for assistance under the Hazard Mitigation Grant Program. The designation is FEMA-4408-DR.

CONTIGUOUS STATE EVENTS OF POTENTIAL INTEREST TO PENNSYLVANIA:

Delaware:	Normal Operations
Maryland:	Enhanced Monitoring in support of excessive heat event
New Jersey:	Enhanced Monitoring in support of severe weather event
New York:	Enhanced Monitoring in support of severe weather event
Ohio:	Normal Operations
West Virginia:	Normal Operations

24-Hour Projected Weather Statewide:

National Weather Service, 0600 hours, 6/27/24

Variable amounts of clouds but dry conditions covered the entire Commonwealth early today. A secondary push of cooler and drier air will move southeast across the region this morning, followed by a mix of clouds and sun along with a light to moderate northwest breeze for this afternoon.

Look for high temperatures today in the low to mid 70s over the higher terrain of northern and western Pennsylvania and low to mid 80s in the Central and Southern Valleys.

High pressure will become centered over western New York and northwestern Pennsylvania tonight bringing clear skies, cool temperatures and light wind. These conditions will also lead to the formation of valley fog, given moist ground from yesterday's widespread rainfall.

Lows tonight will vary from the chilly mid and upper 40s across the northern mountains to the upper 50s and low 60s in the Southern Valleys. Mostly sunny conditions with an 8 to 10 mph southerly breeze will occur on Friday.

A warmer and more humid airmass will surge back into the state Friday night, accompanied by scattered late night showers and thunderstorms. Gusty thunderstorms are possible again on Saturday as a belt of relatively strong southerly winds at the surface and southwesterly winds aloft becomes located over central and eastern Pennsylvania preceding a cold front.

WATCHES AND WARNINGS:

None



Current Watches, Warnings, and Advisories



Graphic Created
June 27th, 2024
5:10 AM EDT

TROPICAL WEATHER OUTLOOK:



Two-Day Graphical Tropical Weather Outlook

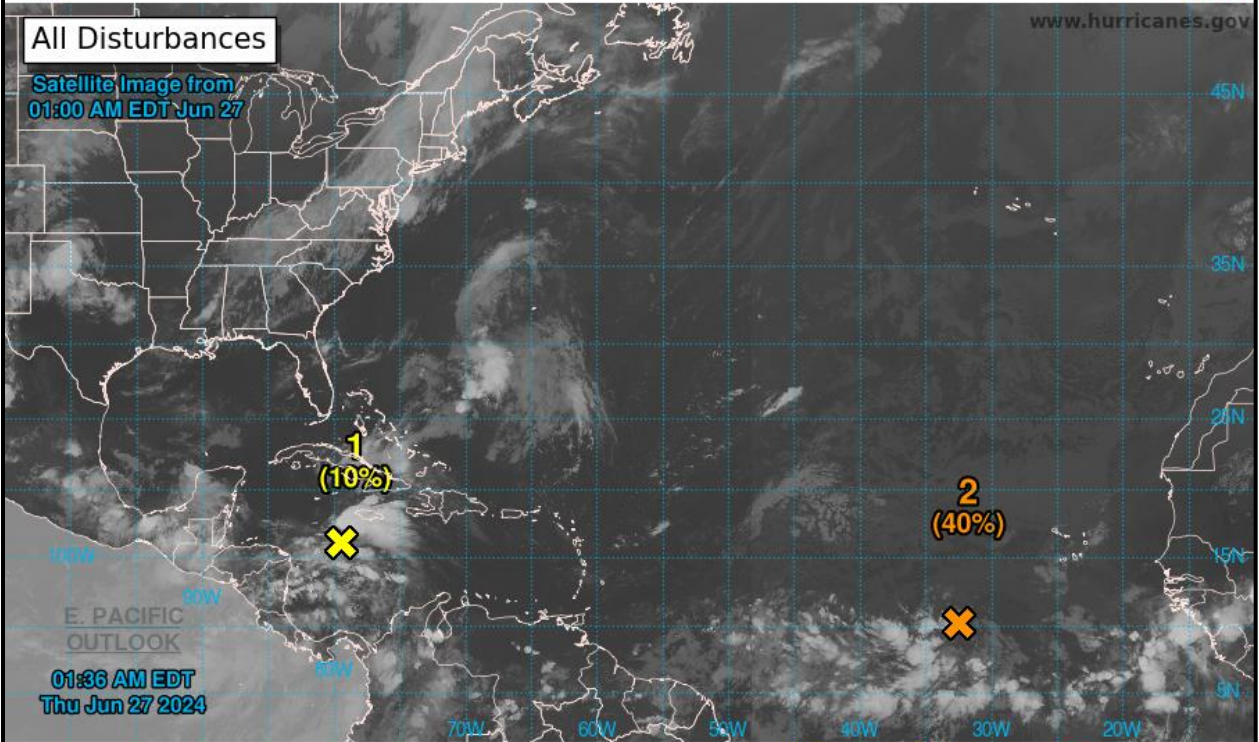
National Hurricane Center Miami, Florida



www.hurricanes.gov

All Disturbances

Satellite Image from
01:00 AM EDT Jun 27



01:36 AM EDT
Thu Jun 27 2024

Current Disturbances and Two-Day Cyclone Formation Chance: < 40% 40-60% > 60%

Tropical or Sub-Tropical Cyclone: Depression Storm Hurricane

Post-Tropical Cyclone or Remnants