



OFFICE OF THE DIRECTOR

**DATE:**

July 11, 2024

**TO:**

The Honorable Josh Shapiro  
Governor  
Commonwealth of Pennsylvania

**FROM:**

Randy Padfield  
Director, PA Emergency Management Agency

**TIME PERIOD:**

This report covers the period from 0600 hours, July 10, 2024, through 0600 hours, July 11, 2024.

**STATUS REPORT:** (as of 0600 hours)

**THREAT STATUS:**

**National Terrorism Advisory System:** There are no current advisories.

**Commonwealth Response Coordination Center (CRCC) Status:** Normal Operations

**County EOC Activations:** None

**Municipal EOC Activations:** None

**CAPABILITIES STATUS:**

**PA All-Hazards Type-3 Incident Management / Team – Mission Capable**

**PA-Task Force 1 (PA-TF1)** - Two members deployed to College Station, Texas on 7/7/24.

**INFRASTRUCTURE STATUS:**

**Major Road Closures:** I-676 westbound in Philadelphia County

**Power Outage Reports:** As of 0540 hours, 5,853 customers

**Telephone Outage Reports:** None

**SIGNIFICANT EVENTS:**

**OPEN:**

**SINKHOLE WITH EXPOSED GAS LINE – Northampton County, 7/11/24** - Emergency crews were called to the intersection of South 13<sup>th</sup> and Butler Streets in Easton City for a report of a four-foot-deep sinkhole in the roadway, which exposed a gas line. UGI was notified to inspect the line. The roadway will be closed between Washington and Lehigh Streets until repairs can be made.

**ROAD CLOSURE – Philadelphia County – 7/11/24** - I-676 westbound closed between the off ramp for the Ben Franklin Parkway to the exits for I-76 (Schuylkill Expressway) in the City of Philadelphia due to a jack-knifed tractor trailer on the exit ramp for I-76 west. There was no trapped queue, and traffic is being detoured off at the exit for the Ben Franklin Parkway. There was a small diesel leak that was contained to the roadway. It is unknown what the truck was hauling, however, the trailer was not breached.

**ADVERSE WEATHER – Statewide, 7/10/24** – The Commonwealth Watch and Warning Center (CWWC) was placed in an “Enhanced Watch” status at 1000 hours to monitor the remnants of Tropical Storm Beryl which entered the Commonwealth. Total power outages peaked at 35,719 at around 1630 hours, but gradually declined throughout the overnight hours. Multiple roadways were closed due to trees and utilities down blocking the lanes of travel. Numerous Severe Thunderstorm Warnings were issued across the Commonwealth, as well as Flash Flood Warnings in Bradford, Luzerne and Wyoming Counties. Tornado Watches were also issued for 38 counties, and a Tornado Warning was issued for Bradford County, however, no touchdowns were reported. All storms have cleared the Commonwealth, the CWWC has returned to normal operations, and the situation will continue to be monitored.

**FARM SHOW POWER OUTAGE – Dauphin County, 7/9/24** - The Pennsylvania Farm Show Complex, located in the 2300 block of North Cameron Street in Harrisburg City, experienced a power outage. A circuit breaker in the Exposition Hall area was determined to be faulty, and a part was ordered to make repairs. The complex began hosting a national basketball tournament on 7/10/24, and a resource request for generators and light sets was submitted. The request was fulfilled, and the equipment was delivered to the complex. Power was restored on 7/10/24 and the equipment will be returned on 7/11/24.

**WATER LEAK – Lancaster County, 6/1/24** - A 3/4" cap on a water line broke on the 3rd floor of the Lancaster County Government Building, 150 North Queen Street in the City of Lancaster. The leak caused water damage to the 3rd floor as well as the floors below. A damage assessment was conducted by the Emergency Management staff, the County Facilities Director, and Complete Restoration. On 6/2/24, the County Commissioners decided to close the government center on Monday, 6/3/24, while evaluation of water damage in the building continues. The center reopened to the public on 6/10/24, but many of the offices are out of their normal locations and the facility is still in recovery mode.

**ROAD CLOSURE DUE TO SUBSIDENCE – Cambria County, 4/25/24** - An engineer for West Taylor Township contacted the county EMA about subsidence of the roadway in the 100 block of Batzel Road. Emergency management staff responded and noted considerable subsidence of the roadway. This is reportedly an ongoing issue where the township lays down new asphalt as a temporary measure. Electrical service and a cable line are pulled tight between the nearby residence and a utility pole which seems to have shifted. There is also considerable twisting of the guardrail. Cement barriers will be requested to close the roadway. There are no residents that are currently affected by this closure. There will be a minor detour for emergency vehicles. Engineers are working with the township to develop a long-term repair plan.

**TRAIN DERAILMENT – Columbiana County, Ohio, 2/3/23** - On 2/3/23 at 2130 hours, mutual aid crews from Beaver County responded to a train derailment near Taggart Street, East Palestine, Ohio. Approximately 53 railcars derailed and some of them caught fire. There were five cars of vinyl chloride within the wreckage. Around 2330 hours a call was received from an Environmental Protection Agency (EPA) Region 3 representative, and they advised there was no current impact to PA. EPA Region 5 and Ohio EPA set up air monitoring equipment and they also used handheld monitors, and nothing was detected. Members of the PA Department of Environmental Protection (DEP) Southwest Regional Office were also onsite monitoring through daylight and maintained a presence until there was no threat to PA. An IMAAC model showed a potential impact to residences in PA if harmful chemicals were released from any of the derailed cars. Beaver County EMA Coordinator reported that they followed Columbiana County, Ohio's lead and a message was sent out to 16 registered users in the one-mile zone to shelter in place. Ohio later changed their message to an evacuation, but Beaver County remained as a shelter-in-place due to no residences being impacted. Shell Monaca was provided green foam to help extinguish the fires. Clean-up contractors from SPSI and Hepaco responded to the scene. The shelter-in-place order remained in effect for Beaver County. Beaver County sent tankers from nine departments and an engine to assist in drafting from a lake in town once the railroad deemed it was safe. As of 2/5/23, Columbiana County, Ohio EMA recommended a one-mile evacuation around the incident due to one of the vinyl chloride rail cars showing a temperature increase. This included the 10 homes that were sheltering in place within Beaver County. On 2/6/23, all 20 homes in the PA evacuation zone were evacuated. Beaver County Animal Response Team (CART) requested assistance for trailers from Washington and Westmoreland counties to assist with the evacuation of farm animals from Kindred Spirits Rescue Farm. The recommended evacuation zone remained at one mile. The Pennsylvania Emergency Management Agency (PEMA) ordered a partial activation of the Commonwealth Response Coordination Center (CRCC) at 1100 hours and Beaver County Emergency Operations Center (EOC) partially activated. A planned controlled detonation was performed to empty five rail cars into a trench to burn off the vinyl chloride. Norfolk Southern established a Family Assistance Center for affected residents in New Waterford, Ohio; Beaver Valley Intermediate School remained open. On 2/7/23, the plume from the controlled detonation on 2/6/23 dissipated with no significant air detection identified by EPA Region 3 or PA DEP. Norfolk Southern conducted wrecking operations of damaged cars at the sight. Normal readings were reported by the Ohio Civil Support Team after monitoring the inside of three residences. The Ohio Department of Natural Resources reported approximately 1,800 fish killed within the streams and creeks that were affected. Air monitoring continued and there were no contaminants or concerns. The PEMA CRCC demobilized on 2/8/23 at 1600 hours. All roads that were closed in PA, including PA-51, were reopened. The Beaver County EOC deactivated at 1200 hours on 2/10/23. A public inquiry line remains operational. On 2/14/23, the EPA identified three other chemicals that were part of the train. They continued to monitor the air and waterways for contamination. On 2/23/23, PEMA, in conjunction with the Departments of Health (DOH) and Environmental Protection, launched a website to provide information to Commonwealth residents about the derailment. On 2/28/23, the Pennsylvania Department of Health opened a Health Resource Center in Darlington Township, Beaver County for residents of Beaver and Lawrence counties who have health concerns following the Norfolk Southern train derailment. On 3/1/23, door-to-door surveys were conducted for 22 households within the 1-mile evacuation zone. Additional discussion led to a decision to do CDC outreach (door knocking) within the 2-mile radius in Pennsylvania, which began on 3/2/23. Approximately 450 healthcare providers participated in three webinars conducted on 2/28/23 and 3/1/23 for major medical providers in the Southwestern Region. Sample testing and review on Norfolk Southern soil sampling continued by Commonwealth agencies. The EPA Region 3 Director accompanied by staff, Pennsylvania Senator Casey, and Representative Deluzio toured the site on 3/2/23. On Monday, 3/6/23, Pennsylvania Governor Shapiro announced that Norfolk Southern has agreed to pay

Pennsylvania millions of dollars for the impacts of the train derailment. Norfolk Southern agreed to reimburse local fire departments to replace contaminated or damaged equipment used during the response to the derailment, to provide funds for a Community Relief Fund to be run by officials in Beaver and Lawrence counties, and to reimburse state agencies (DEP, DOH, and PEMA) for associated costs. Norfolk Southern collected soil samples with representatives from the EPA present. Removal of the train tracks closest of Pennsylvania began over the weekend and was completed 3/5/23. Excavation of the contaminated soil began, and odors were expected to be released into the air. Air monitoring was increased during the process which is expected to take at least three to four days depending on the depth of the contaminants in the soil. The EPA requested Norfolk Southern to provide additional financial assistance to residents within one mile of the derailment site if they are impacted by the odors released during the excavation of the soil which the company has agreed too. Pennsylvania state agencies supported another East Palestine Community Resource Fair this Thursday at the East Palestine High School. Beaver County coordinated a separate Community Resource Fair for Pennsylvania residents for the following week which the state agencies supported. U.S. Senator Bob Casey completed a quick tour and talk at the Health Resource Center Monday morning. A Norfolk Southern contracted company sampled 16 private wells in Pennsylvania. DEP sampled 27 private wells in the area as of Monday with more sampling expected 3/7/23. On 3/8/23 DHS coordinated a call with Beaver and Lawrence counties about the possibility of applying for a Substance Abuse and Mental Health Services Administration (SAMHSA) Emergency Response Grant (SERG) to provide funding for additional behavioral health services that may be required following this incident. DOH and PEMA also participated in the call. Excavation work at the site was temporarily stopped due to elevated readings and release of odor. The excavation of the soil at the south tracks of the derailment site was mostly complete. As of 3/13/23, Norfolk Southern was waiting on soil samples to come back from the elevated spots that were detected. Due to contaminants being detected during the initial excavation at two to four inches, additional sampling was done at 12 to 15 inches to make sure all contaminated soil is removed. Soil excavation for the north track was still in the planning process. As of 3/16/23, the excavation of the soil at the south tracks of the derailment site was completed. The Health Resource Center (HRC) completed its final daily operational period at 1400, 3/16/23. The HRC moved to operations on Thursdays beginning 3/23/23. Excavation of the north track and removal of contaminated soil and water continued. OSHA joined the on-site operations to provide support to the safety officer and ensure that the community and personnel are safe during operations. EPA Region 5 conducted an information session focused on air quality and air monitoring on 4/27/23. EPA Region 5 conducted an information session focused on surface water on Thursday, May 11, at the Way Station and First United Presbyterian Church in East Palestine. As of 6/27/23, excavation underneath Pleasant Drive was complete, and the roadway was opened for traffic on 6/28/23. Contamination underneath the north and south tracks was removed, and both tracks are fully operational. As of 7/11/23, surface and ground water sampling plans for the remainder of the cleanup have been approved by EPA. In addition, gravel was laid on the turnaround on East Martin Street in preparation for asphalt to help control erosion and dust. A site storm water inspection was conducted, and additional storm water controls were put into place to improve the existing storm water management plan. EPA hosted a site progress information session on 7/20/23 at the First United Presbyterian Church in East Palestine. Activities are ongoing. As of 7/31/23, Norfolk Southern offered help with indoor cleaning for homes and business for those within the one-to-two-mile Ohio-Pennsylvania evacuation zone. As of 3/22/24, the EPA and PA DEP continue to monitor wells in the area.

**CLOSED:**

**ROAD CLOSURE DUE TO FATAL MVA – Perry County, 7/10/24** – A fatal motor vehicle accident closed both lanes of US-11 near Cove Road in Penn Township. The southbound lanes

were closed at PA-247 westbound, and the northbound lanes were closed at School House Road. The roadway was open in about three hours.

**DISASTER DECLARATIONS:**

6/7/24 – City of Pittsburgh, Allegheny County has issued a Declaration of Disaster Emergency due to a multi-residential structure fire at the 2<sup>nd</sup> Avenue Commons Shelter on 6/4/24.

4/11/24 - Oakdale Borough, Allegheny County has issued a Declaration of Disaster Emergency due to adverse weather.

4/10/24 - Jefferson Township, Greene County has issued a Declaration of Disaster Emergency due to adverse weather.

4/10/24 - Jackson Township, Greene County has issued a Declaration of Disaster Emergency due to adverse weather.

4/10/24 - Perry Township, Greene County has issued a Declaration of Disaster Emergency due to adverse weather.

4/10/24 - Wayne Township, Greene County has issued a Declaration of Disaster Emergency due to adverse weather.

4/10/24 - Center Township, Greene County has issued a Declaration of Disaster Emergency due to adverse weather.

4/9/24 - Aleppo Township, Greene County has issued a Declaration of Disaster Emergency due to adverse weather.

4/8/24 - Washington Township, Greene County has issued a Declaration of Disaster Emergency due to adverse weather.

4/8/24 - Richhill Township, Greene County has issued a Declaration of Disaster Emergency due to adverse weather.

4/5/24 – Gilmore Township, Greene County has issued a Declaration of Disaster Emergency due to adverse weather.

4/4/24 - Nippenose Township, Lycoming County has issued a Declaration of Disaster Emergency due to adverse weather.

4/4/24 - Deemston Borough, Washington County has issued a Declaration of Disaster Emergency due to adverse weather.

9/25/23 – Blawnox Borough, Allegheny County has issued a Declaration of Disaster Emergency due to a water main break and damages to Freeport Road.

9/19/23 – Fairchance Borough, Fayette County issued a Declaration of Disaster Emergency due to a dam issue that has caused or threatens to cause injury, damage, and suffering to the persons and property of Fairchance Borough on or about 9/19/23.

8/14/23 – Plum Borough, Allegheny County, issued a Declaration of Disaster Emergency due to a house explosion on 8/13/23.

9/10/21 - The Honorable Tom Wolf, Governor of the Commonwealth of Pennsylvania, requested a major disaster declaration from the President through the Federal Emergency Management Agency to provide additional support for state, county and municipal governments, and individuals affected by the remnants of Hurricane IDA between 8/31/21 and 9/5/21. The declaration includes Individual Assistance to individuals and households in Bucks, Chester, Delaware, Montgomery, Philadelphia, and York counties, and assistance under the Hazard Mitigation Grant Program in all areas of the Commonwealth. Public Assistance is under review. The President approved the declaration on 9/10/21 under Major Disaster Declaration FEMA-4618-DR. 9/24/21 – Amendment No. 1 designates Bedford and Northampton counties for Individual Assistance. 10/8/21 – Amendment No. 2 designates Bucks, Chester, and Montgomery counties for Public Assistance (already designated for Individual Assistance). 10/14/21 – Amendment No. 3 designates Bedford, Philadelphia, and York counties for Public Assistance (already designated for Individual Assistance). Plus, Fulton, Huntingdon, Luzerne, and Schuylkill counties for Public Assistance. 10/20/21 – Amendment No. 4 designates Delaware County for Public Assistance (already designated for Individual Assistance), and Dauphin County for Public Assistance.

8/31/21 - The Honorable Tom Wolf, Governor of the Commonwealth of Pennsylvania, signed a statewide Proclamation of Disaster Emergency on 8/31/21 in response to severe weather event Hurricane Ida that impacted the Commonwealth of Pennsylvania causing widespread threats of serious flash and riverine flooding and other adverse impacts throughout the Commonwealth.

3/30/20 - Governor Tom Wolf requested a major disaster declaration from the President through the Federal Emergency Management Agency to provide additional support for state, county and municipal governments and certain nonprofits, as well as individuals who are struggling during the COVID-19 outbreak. The request for a major disaster declaration will provide the same emergency protective measures available under the nationwide emergency proclamation; the following Individual Assistance programs: Disaster Unemployment Assistance, Crisis Counseling, Community Disaster Loans, and the Disaster Supplemental Nutrition Program; and Statewide Hazard Mitigation. The President approved the declaration on 3/30/20 under Major Disaster Declaration FEMA-4506-DR.

11/27/18 – A Major Disaster Declaration was declared on 11/27/18 for severe storms and flooding that occurred 8/10/18 – 8/15/18. Public Assistance (Cat A-G) was approved for Bradford, Columbia, Lackawanna, Lycoming, Montour, Northampton, Schuylkill, Sullivan, Susquehanna, Tioga, and Wyoming counties. In addition, all areas in the Commonwealth of Pennsylvania are eligible for assistance under the Hazard Mitigation Grant Program. The designation is FEMA-4408-DR.

**CONTIGUOUS STATE EVENTS OF POTENTIAL INTEREST TO PENNSYLVANIA:**

Delaware:	Normal Operations
Maryland:	Normal Operations
New Jersey:	Normal Operations
New York:	Limited Activation due to Adverse Weather and Heat Warnings
Ohio:	Normal Operations
West Virginia:	Normal Operations

**24-Hour Projected Weather Statewide:**

## National Weather Service, 0410 hours, 7/11/24

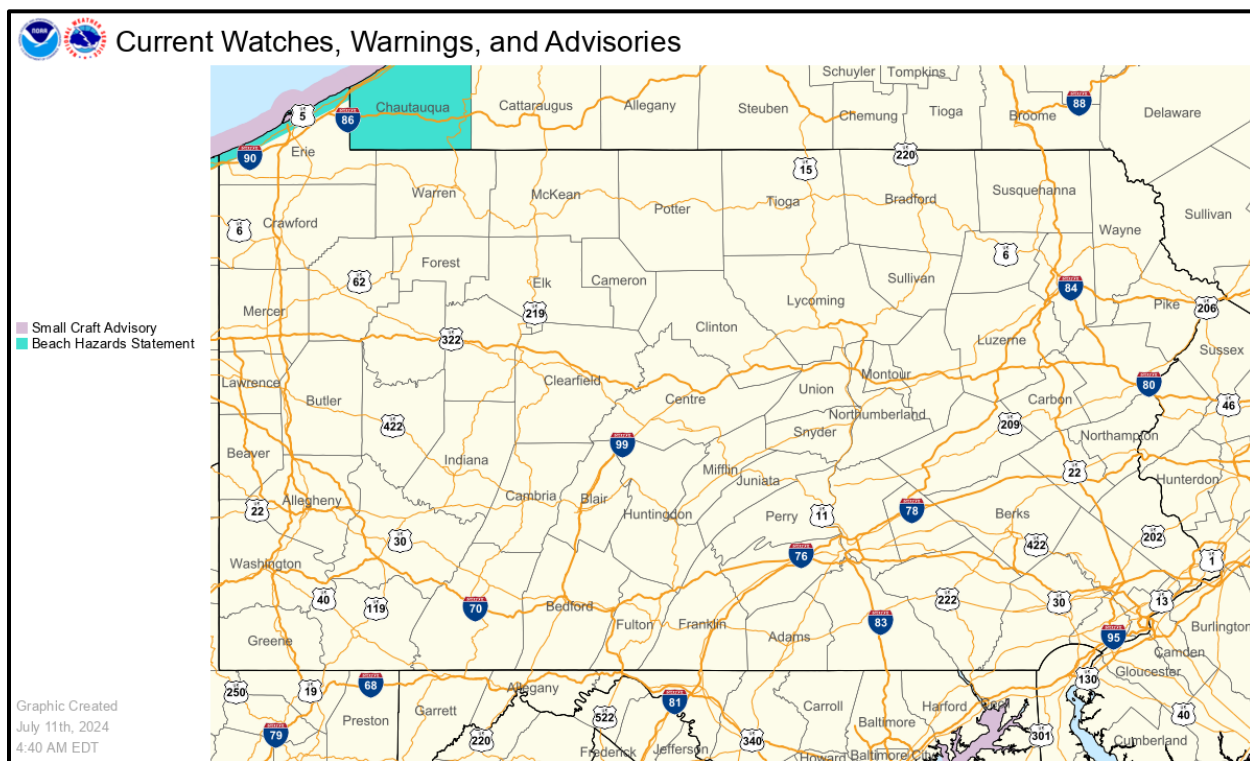
The slow-moving remnants of Tropical Storm Beryl will track north of Pennsylvania early today, bringing plenty of clouds and the chance of a shower to the northern mountains. For the rest of the state, expect partly sunny skies with much lower temperatures and humidity than recent days. Highs will range from the low 70s over the northern mountains to near 90 in Philadelphia.

High pressure building into western Pennsylvania will bring fair and seasonable weather to most of the state tonight. However, a stalled front along the east coast could produce a few showers over the extreme southeast corner of the Commonwealth. Lows tonight will range from the mid-50s in the coolest valleys of the north to the mid-70s in Philadelphia.

A weak area of low pressure will ride up the stalled front on the east coast on Friday, bringing a good chance of showers to the southeast part of Pennsylvania. However, high pressure over the western part of the state should maintain fair weather for most of the region. Highs Friday will be in the 80s.

### WATCHES AND WARNINGS:

None



### TROPICAL WEATHER OUTLOOK:



## Two-Day Graphical Tropical Weather Outlook

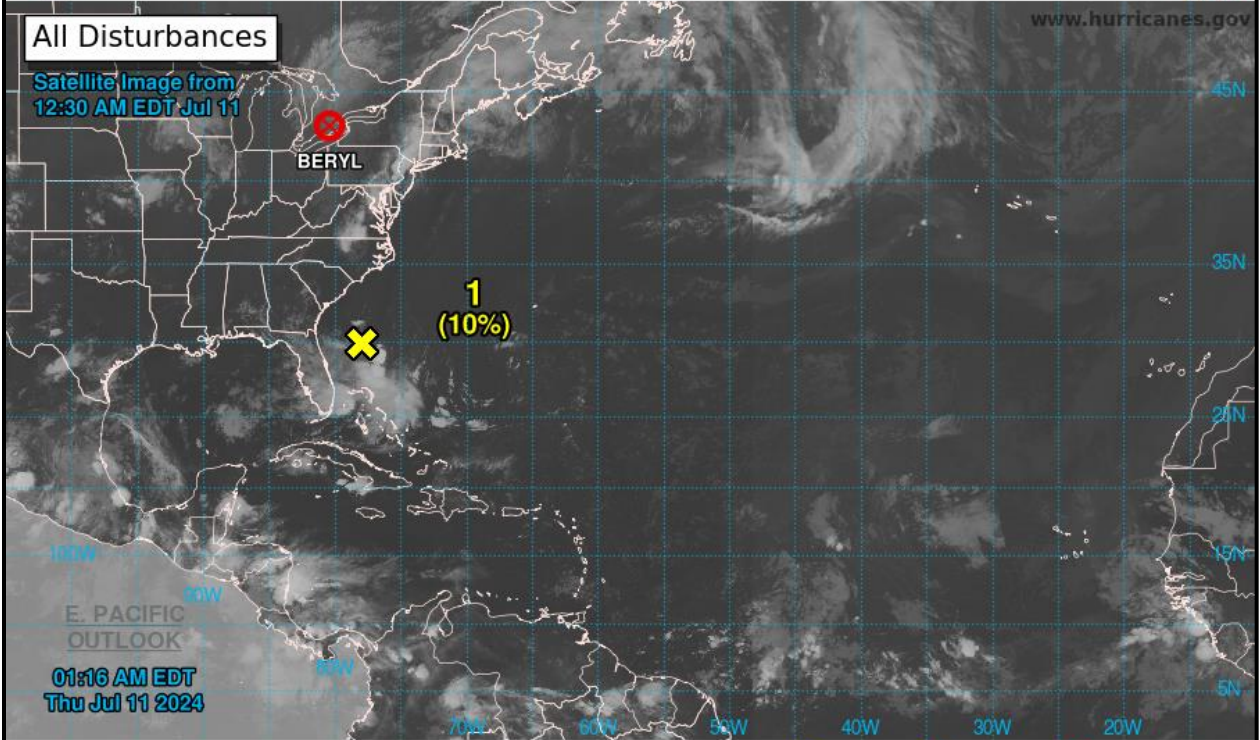
National Hurricane Center Miami, Florida



All Disturbances

Satellite Image from  
12:30 AM EDT Jul 11

www.hurricanes.gov



Current Disturbances and Two-Day Cyclone Formation Chance: **X** < 40% **⊗** 40-60% **⊗** > 60%

Tropical or Sub-Tropical Cyclone: **○** Depression **⊗** Storm **⊗** Hurricane

**⊗** Post-Tropical Cyclone or Remnants